




LM-79-19 Test Report

For

LEDVANCE LLC

(Brand Name:  LEDVANCE)

200 Ballardvale Street, Wilmington, MA 01887, U.S.A

Model name(s):

LNSLOT1A48UNHD8SC148DIPWH

LNSLOT1A48UNHD8SC148DIWWH

Report Type: Testing and Report According to IES LM-79-2008

**Type of
Luminaire:** LED Linear Light

Report Date: 2022-07-14
Ningbo TengLi Testing Co., Ltd

Prepared By: 2nd floor, Block B, Ningbo Testing and Certification Base,
No. 66 Qingyi Road, Ningbo National Hi-Tech Zone,
Ningbo, Zhejiang

Test & Report By:

Nick Song

Engineer: Nick Song

Review By:

Garman Mo

Manager: Garman Mo

Note: 1. The results contained in this report pertain only to the tested samples

2. This report does not imply product certification, approval, or endorsement by A2LA, or any agency of the Federal Government.



1.1 Product Information:

Model Number	LNSLOT1A48UNHD8SC148DIPWH LNSLOT1A48UNHD8SC148DIWWH	
Remark	N/A	
Representative (Tested) Model	LNSLOT1A48UNHD8SC148DIPWH(3000K) LNSLOT1A48UNHD8SC148DIPWH(3500K) LNSLOT1A48UNHD8SC148DIPWH(4000K)	
Model Difference	Lamp housing colors are different.	
SKU (if available)	N/A	
Type of Luminaire (for integral lamps, list base type and lamp type)	LED Linear Light	
LED Manufacturer	Bridgelux, Inc.	
LED Model	BXEN-XXX-11L-37A-00-0-0	
Dimming	Dimmable	
Integral Controls	N/A	
Sample Number	JAE220201-E1	
Date of Receipt	Jul.11.2021	
Luminaire Aperture (for downlights)	--	in.
Luminaire Length	--	mm
Luminaires Width	--	mm
Number of Units (modular products)	N/A	s

1.2 Rated Values:

Rated Voltage / Frequency	120-347Vac, 50/60Hz
Nominal Power	48W
Rated Initial Lamp Lumen	4800lm
Declared CCT	3000K, 3500K, 4000K

1.3 Test Specifications:

Test item	<ol style="list-style-type: none"> 1. Total Luminous Flux 2. Luminous Distribution Intensity 3. Luminous Efficacy 4. Correlated Color Temperature 5. Color Rendering Index 6. Chromaticity Coordinate 7. Electrical Parameters
Reference Standard	<ol style="list-style-type: none"> 1. IES LM-79-2019 Electrical and Photometric Measurements of Solid-State Lighting Products 2. ANSI C78.377-2008 Specifications for the Chromaticity of Solid State Lighting Products 3. CIE 13.3-1995 Method of Measuring and Specifying Colour Rendering Properties of Light Sources 4. CIE 15-2004 Technical Report Colorimetry 5. IESNA LM-16-93 Practical Guide to Colorimetry of Light Source

1.4 Test Methods

1) Photometric and Light Distribution Measurement – Goniophotometer Method:

Photometric parameters were measured using the goniophotometer and software. The ambient temperature shall be maintained at $25^{\circ}\text{C} \pm 1^{\circ}\text{C}$, measured at a point not more than 1 m from the sample and at the same height as the sample. The sample was operated at 120 or rated Volts AC, 60Hz. It was stabilized before measurement was made. Luminous flux, luminaire efficacy, zonal lumen were calculated from the software taken at 1° vertical intervals and 22.5° horizontal intervals.

2) Chromaticity Measurement – Sphere-Spectroradiometer Method:

Chromaticity parameters were measured using an integrating sphere, a spectroradiometer and software. The ambient temperature condition inside the sphere was maintained at $25^{\circ}\text{C} \pm 1^{\circ}\text{C}$. The sample measurements were made using a spectroradiometer connected by a fiber optic cable and detector through the detector port of the integrating sphere. The sample was operated at 120 or rated Volts AC, 60Hz. It was stabilized before measurement was made. Chromaticity coordinates, correlated color temperature and color rendering index were calculated from the spectral power distribution taken at 5 nm intervals over the range of 380 to 780 nm.

3) Electrical Measurements:

Electrical parameters were measured using power meters incorporated in goniophotometer or sphere-spectroradiometer system. The ambient temperature surrounding the sample was maintained at $25^{\circ}\text{C} \pm 1^{\circ}\text{C}$. The sample was operated at 120 or rated Volts AC, 60Hz. It was stabilized before measurement was made. Voltage, frequency, current, power, power factor and total harmonic distortion were measured by and read from the power meter.



2.1 Electrical, Photometric and Chromaticity Measurements

Test date	2022-07-13	Test Ambient:	25 ± 1 ° C
Test Orientation	As intended	Stabilization Time (min)	60
Model Number	LNSLOT1A48UNHD8SC148DIP WH(3000K)	Total Operating Time(min)	75

Electrical Measurement:

Sample No.	Voltage (Vac)	Frequency (Hz)	Current (A)	Power (W)	Power Factor	THD %
JAE220201-E1	120.1	60.01	0.3976	47.25	0.9898	13.40
	347.0	60.01	0.1431	46.67	0.9401	14.80

Photometric Measurement – Goniophotometer Method(Tset Distance: 26.00m):

Parameter	Result	
Test Voltage (V)	120	347
Frequency (Hz)	60	60
Total Luminous (lm)	4935.0	4924.4
Luminous Efficacy (lm/W)	104.15	105.51
Beam Angle (°)	100.7	--
Center Beam Candle Power (cd)	1466	--

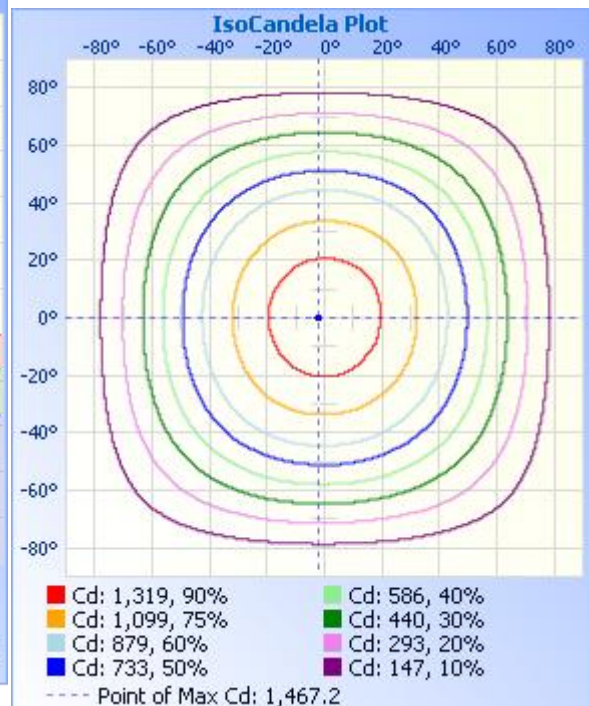
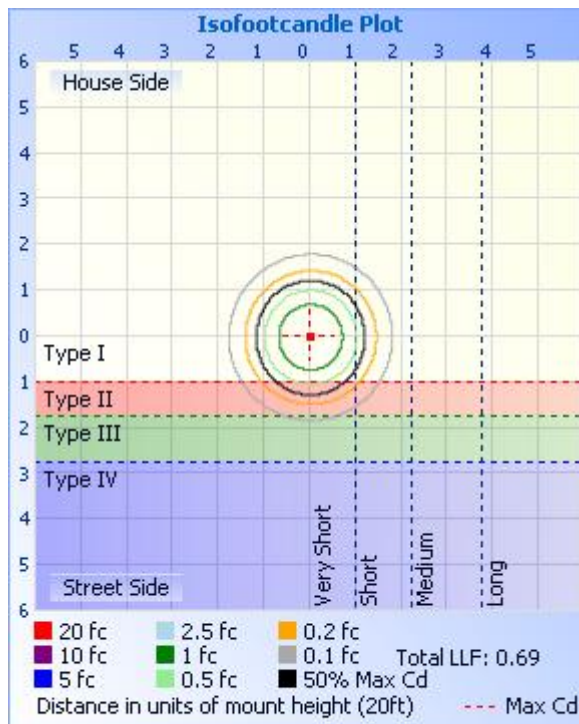
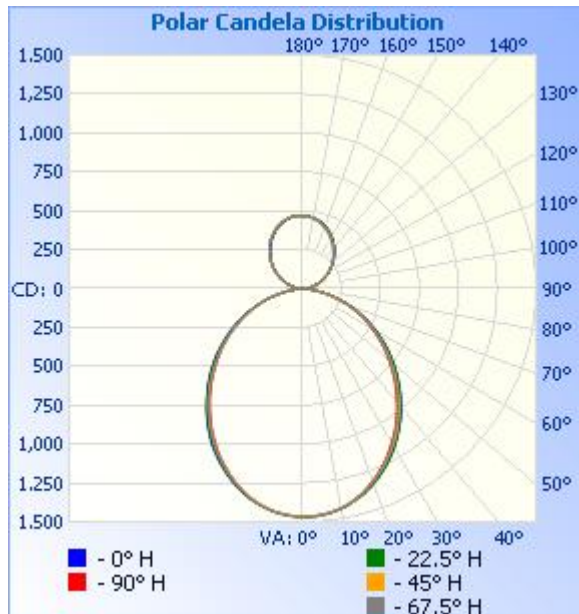


Zonal Lumen Tabulation

Zonal Lumen Summary		
Zone	Lumens	% Luminaire
0-30	1,099.7	22.3%
0-40	1,761.7	35.7%
0-60	2,984.3	60.5%
60-90	686.5	13.9%
70-100	301.3	6.1%
90-120	266.1	5.4%
0-90	3,670.8	74.4%
90-180	1,263.4	25.6%
0-180	4,934.2	100%

Lumens Per Zone					
Zone	Lumens	% Total	Zone	Lumens	% Total
0-10	138.1	2.8%	90-100	29.5	0.6%
10-20	389.3	7.9%	100-110	87.6	1.8%
20-30	572.2	11.6%	110-120	149.0	3%
30-40	662.1	13.4%	120-130	197.1	4%
40-50	655.8	13.3%	130-140	222.5	4.5%
50-60	566.8	11.5%	140-150	220.3	4.5%
60-70	414.7	8.4%	150-160	187.1	3.8%
70-80	223.0	4.5%	160-170	125.9	2.6%
80-90	48.8	1.0%	170-180	44.4	0.9%

Photometric Data





Candela Table - Type C

	0	22.5	45	67.5	90	112.5	135	157.5	180	202.5	225	247.5	270	292.5	315	337.5	360
0	1466	1466	1466	1466	1466	1466	1466	1466	1466	1466	1466	1466	1466	1466	1466	1466	1466
1	1465	1466	1465	1466	1466	1464	1465	1463	1464	1465	1464	1466	1466	1467	1465	1465	1465
2	1463	1466	1463	1467	1466	1463	1465	1462	1462	1463	1460	1464	1463	1464	1464	1465	1463
3	1461	1465	1462	1467	1465	1462	1462	1458	1460	1462	1458	1464	1461	1464	1463	1464	1461
4	1460	1464	1460	1462	1463	1459	1459	1456	1458	1460	1456	1462	1457	1462	1462	1461	1460
5	1457	1461	1457	1460	1457	1455	1455	1452	1455	1456	1452	1456	1452	1459	1460	1458	1457
6	1453	1458	1456	1456	1454	1451	1450	1448	1450	1450	1447	1450	1449	1453	1457	1454	1453
7	1449	1453	1449	1451	1450	1446	1445	1443	1445	1445	1442	1446	1445	1448	1453	1450	1449
8	1444	1447	1442	1444	1445	1441	1439	1439	1440	1439	1435	1440	1438	1441	1449	1446	1444
9	1438	1441	1436	1439	1438	1433	1432	1433	1433	1433	1427	1436	1430	1435	1444	1440	1438
10	1432	1435	1429	1431	1431	1426	1427	1427	1426	1425	1419	1426	1422	1428	1436	1433	1432
11	1426	1428	1420	1423	1423	1418	1419	1419	1419	1418	1410	1418	1415	1420	1431	1425	1426
12	1417	1420	1413	1416	1414	1410	1410	1409	1410	1410	1401	1408	1405	1411	1422	1416	1417
13	1408	1411	1404	1408	1404	1400	1400	1400	1401	1400	1391	1398	1394	1403	1414	1407	1408
14	1399	1403	1394	1397	1392	1389	1390	1390	1391	1390	1381	1388	1384	1392	1404	1399	1399
15	1390	1393	1384	1385	1382	1378	1380	1380	1382	1380	1370	1375	1372	1380	1394	1389	1390
16	1381	1384	1374	1374	1370	1367	1369	1368	1370	1368	1358	1363	1360	1368	1382	1379	1381
17	1370	1374	1362	1362	1358	1354	1358	1356	1358	1357	1345	1349	1344	1358	1372	1369	1370
18	1358	1361	1349	1348	1342	1342	1346	1345	1346	1345	1332	1337	1331	1347	1359	1358	1358
19	1345	1349	1335	1334	1330	1329	1333	1333	1333	1331	1320	1323	1317	1333	1346	1346	1345
20	1333	1335	1321	1322	1316	1314	1319	1319	1319	1317	1305	1307	1301	1318	1334	1332	1333
21	1320	1321	1308	1306	1300	1300	1304	1306	1305	1303	1290	1293	1287	1303	1319	1318	1320
22	1306	1306	1293	1290	1284	1285	1290	1293	1290	1288	1275	1276	1272	1286	1303	1305	1306
23	1291	1291	1278	1273	1268	1266	1276	1279	1275	1273	1260	1261	1254	1270	1288	1290	1291
24	1276	1278	1264	1257	1251	1251	1260	1265	1260	1258	1244	1244	1239	1254	1272	1276	1276
25	1261	1263	1247	1242	1235	1236	1245	1249	1245	1242	1226	1227	1222	1237	1257	1260	1261
26	1246	1246	1231	1227	1218	1219	1228	1234	1228	1226	1210	1210	1204	1219	1242	1245	1246
27	1229	1229	1212	1208	1200	1200	1211	1219	1212	1208	1194	1192	1186	1204	1224	1227	1229
28	1212	1212	1196	1190	1181	1183	1194	1202	1195	1191	1177	1175	1168	1184	1207	1209	1212
29	1194	1194	1178	1170	1162	1164	1176	1184	1178	1173	1158	1157	1148	1166	1187	1191	1194
30	1177	1177	1162	1154	1142	1145	1159	1167	1161	1154	1139	1137	1129	1148	1168	1174	1177



31	1159	1158	1144	1134	1125	1126	1140	1148	1142	1136	1120	1117	1110	1128	1149	1156	1159
32	1140	1139	1126	1114	1107	1107	1123	1128	1123	1117	1101	1097	1092	1108	1130	1137	1140
33	1122	1119	1106	1093	1086	1088	1104	1109	1104	1097	1082	1078	1072	1090	1110	1119	1122
34	1104	1100	1087	1075	1067	1069	1084	1090	1084	1077	1062	1058	1051	1070	1090	1101	1104
35	1084	1082	1066	1055	1047	1049	1065	1070	1064	1057	1042	1038	1031	1051	1070	1081	1084
36	1064	1064	1046	1033	1026	1028	1044	1049	1044	1038	1023	1017	1010	1031	1051	1061	1064
37	1045	1043	1026	1013	1005	1007	1023	1029	1023	1017	1002	996	989	1010	1031	1040	1045
38	1025	1022	1005	992	985	986	1002	1008	1003	997	982	976	970	990	1010	1019	1025
39	1004	1002	984	972	963	965	982	987	982	976	962	955	948	968	989	999	1004
40	983	981	965	951	941	944	961	966	960	956	941	934	928	947	968	978	983
41	961	960	943	929	921	923	940	945	939	935	920	913	908	926	947	957	961
42	941	939	920	909	900	902	919	924	918	914	899	892	886	905	924	935	941
43	920	917	900	889	877	880	898	903	898	894	877	872	864	884	904	915	920
44	898	897	877	867	856	860	876	883	877	872	856	850	843	862	882	893	898
45	877	875	856	845	837	838	854	861	857	851	835	829	822	841	859	871	877
46	854	853	833	824	815	817	833	839	836	830	813	807	801	819	837	850	854
47	833	833	813	802	793	795	811	818	815	808	791	786	778	798	816	829	833
48	812	811	790	779	771	774	788	795	793	787	769	764	757	774	794	808	812
49	791	788	768	759	750	753	766	773	771	765	747	742	737	752	771	787	791
50	769	767	746	737	728	733	744	751	750	744	726	721	716	731	750	765	769
51	747	745	724	715	708	713	723	730	729	722	705	700	695	710	727	743	747
52	725	723	703	693	685	690	700	708	708	700	683	678	675	689	705	721	725
53	704	700	681	670	664	668	678	686	685	678	661	657	654	667	683	699	704
54	682	678	659	649	644	647	657	664	662	656	640	635	633	646	663	677	682
55	659	656	637	628	622	626	634	643	640	634	619	614	612	624	640	655	659
56	638	633	615	607	601	605	613	621	619	612	597	593	592	603	618	633	638
57	615	611	595	584	581	583	591	598	597	590	575	571	570	583	596	611	615
58	594	589	572	564	559	562	570	577	575	568	554	551	549	561	574	589	594
59	571	566	550	543	538	540	547	555	553	546	534	530	528	539	552	567	571
60	549	544	529	521	517	519	526	533	533	525	512	509	508	518	530	545	549
61	527	522	507	500	496	498	504	511	511	503	491	488	487	497	509	523	527
62	505	500	487	479	474	476	482	489	489	481	470	467	466	476	488	501	505



63	483	478	466	459	453	455	461	468	467	460	449	447	445	454	465	479	483
64	462	455	445	438	432	434	440	446	445	438	428	426	424	432	444	457	462
65	439	433	424	416	411	413	418	425	424	417	408	405	404	411	423	435	439
66	417	412	403	395	391	392	396	403	402	395	387	384	384	390	401	413	417
67	394	390	381	374	371	371	375	381	381	373	367	363	362	370	379	391	394
68	372	368	360	352	350	350	354	360	359	352	346	343	342	348	358	369	372
69	350	347	339	331	329	330	333	338	337	331	326	321	321	328	337	347	350
70	330	325	319	310	309	310	311	317	316	309	306	302	301	307	316	326	330
71	308	304	298	290	289	289	290	295	295	288	285	282	281	286	295	304	308
72	287	283	277	270	269	269	269	274	273	268	264	262	261	266	274	282	287
73	265	261	256	250	248	250	249	252	252	247	243	243	241	245	253	261	265
74	243	240	235	230	229	230	229	232	231	227	223	224	221	225	232	239	243
75	221	219	215	210	208	210	209	212	211	207	204	204	201	205	212	218	221
76	201	199	195	190	190	190	190	191	191	187	184	185	180	185	192	198	201
77	181	179	175	170	171	171	170	171	171	168	165	165	161	166	172	177	181
78	160	159	155	151	152	152	151	152	151	148	146	146	142	148	152	158	160
79	140	139	136	133	134	133	132	133	132	129	128	128	124	130	134	138	140
80	121	120	117	115	116	115	114	114	114	111	110	110	106	112	116	119	121
81	102	102	99	98	98	97	97	96	95	94	92	93	90	95	98	101	102
82	85	85	83	82	82	81	80	79	78	77	76	77	74	79	82	84	85
83	69	69	67	66	67	65	64	63	62	61	61	62	60	63	66	67	69
84	54	53	52	52	53	51	49	48	47	46	47	48	47	49	51	52	54
85	40	39	39	40	41	39	36	34	33	33	34	37	37	38	38	38	40
86	28	27	28	29	31	29	26	23	23	22	24	28	27	28	27	27	28
87	17	17	18	20	22	20	17	14	13	13	16	20	21	20	17	16	17
88	8	8	11	14	16	14	9	6	5	6	10	15	17	16	12	8	8
89	3	4	7	11	12	10	6	2	0	2	8	13	15	14	9	4	3
90	0	0	0	0	0	0	0	0	0	0	0	0	0	0	0	0	0
91	1	5	12	19	21	19	14	7	1	4	9	13	15	13	8	3	1
92	2	8	17	23	26	24	18	10	3	7	13	18	19	17	11	5	2
93	5	12	21	28	30	28	23	14	6	10	16	21	23	21	15	8	5
94	8	16	26	32	35	33	28	18	10	13	21	26	28	25	19	11	8



95	12	20	31	37	40	38	32	23	15	17	25	31	32	30	23	15	12
96	17	24	35	43	46	43	37	28	20	21	29	35	37	35	27	19	17
97	23	29	40	48	51	49	42	33	26	26	34	40	42	40	32	24	23
98	29	34	45	52	56	54	48	38	32	32	39	45	47	45	37	29	29
99	34	40	50	58	61	59	52	44	38	38	44	51	53	50	42	34	34
100	41	46	55	62	66	64	58	50	44	44	49	56	58	55	47	40	41
101	47	52	60	68	71	69	64	56	50	50	55	61	63	60	53	46	47
102	54	58	66	73	76	74	70	62	57	57	61	67	69	66	59	52	54
103	61	65	72	79	82	79	75	69	64	64	67	73	75	72	65	59	61
104	67	71	77	84	87	84	81	76	71	71	74	79	81	78	72	66	67
105	74	78	83	89	92	90	88	82	78	78	81	85	86	84	78	73	74
106	81	85	89	95	98	96	94	89	85	85	87	92	93	92	85	80	81
107	88	91	95	101	104	103	100	96	92	92	94	98	99	98	92	87	88
108	95	98	102	107	110	109	107	102	99	100	102	105	106	105	99	94	95
109	102	105	108	113	115	115	113	108	107	107	109	112	113	111	106	100	102
110	110	112	115	119	122	120	120	115	114	115	116	119	120	118	113	108	110
111	117	118	121	125	128	126	126	123	121	122	123	126	127	125	121	115	117
112	124	125	128	131	134	132	133	130	129	129	130	133	134	132	128	123	124
113	131	133	134	137	140	138	139	136	136	136	138	141	141	139	135	130	131
114	138	139	141	143	146	145	146	143	143	144	145	148	148	147	142	137	138
115	145	146	147	149	152	152	152	150	150	152	153	155	156	154	150	144	145
116	152	153	154	156	158	159	159	157	157	160	160	162	163	162	157	151	152
117	159	160	160	162	165	166	166	164	165	168	168	170	170	170	164	159	159
118	166	167	167	169	171	172	172	171	172	175	175	177	177	177	171	166	166
119	173	174	173	175	178	178	179	178	179	182	182	184	185	184	178	174	173
120	181	181	180	181	184	185	185	186	186	189	189	192	192	191	185	181	181
121	188	187	187	188	190	191	191	193	194	197	197	199	199	198	192	188	188
122	195	195	193	194	197	198	198	200	201	204	205	207	207	206	200	196	195
123	202	202	200	201	203	204	205	206	208	211	212	214	214	212	207	204	202
124	209	208	207	207	210	210	212	213	216	219	220	221	222	220	215	211	209
125	216	215	213	213	216	216	219	220	223	227	227	228	229	227	222	218	216
126	223	222	220	220	222	223	226	228	230	234	235	235	235	234	229	225	223



127	230	229	226	226	228	229	231	235	238	241	241	241	243	241	236	232	230
128	237	236	233	233	235	236	238	242	245	248	248	249	249	248	243	239	237
129	244	242	239	238	241	242	244	249	252	255	256	256	256	255	251	247	244
130	251	248	246	245	247	249	251	255	258	262	262	263	263	262	258	253	251
131	258	255	252	251	254	256	258	262	266	269	270	270	269	269	264	260	258
132	264	263	259	258	261	262	265	268	272	275	278	278	277	276	272	268	264
133	271	269	266	264	267	269	272	275	279	282	284	285	284	283	279	274	271
134	278	276	272	270	274	275	278	282	285	289	292	292	291	290	286	281	278
135	285	283	279	276	280	282	285	288	292	296	299	299	298	298	293	288	285
136	291	289	285	282	286	288	292	295	298	303	305	306	305	305	300	295	291
137	298	295	292	288	292	295	298	301	304	310	312	313	312	312	306	302	298
138	304	302	298	295	299	301	304	307	311	317	319	319	318	318	313	308	304
139	311	309	305	301	304	307	310	314	318	324	326	326	325	325	320	315	311
140	317	315	311	307	310	313	317	321	324	331	333	333	331	331	327	321	317
141	324	321	317	313	316	320	323	327	331	338	339	339	337	338	334	328	324
142	331	329	324	320	323	326	329	333	337	345	345	346	343	344	340	335	331
143	337	334	329	326	329	333	335	340	343	351	351	352	350	351	345	341	337
144	343	341	336	333	336	339	341	345	349	357	358	358	356	357	352	348	343
145	349	347	342	338	341	344	347	350	355	363	365	364	362	363	357	354	349
146	355	354	347	344	348	350	352	357	361	368	370	370	368	368	362	360	355
147	360	360	353	350	353	356	357	363	367	374	376	375	373	374	368	366	360
148	367	366	359	356	359	361	362	368	373	381	381	381	379	379	374	372	367
149	372	372	366	362	365	367	369	374	379	387	387	386	385	385	380	377	372
150	378	377	372	368	370	373	375	379	385	391	391	391	390	390	386	383	378
151	384	383	377	373	375	377	380	386	391	396	396	395	395	394	391	388	384
152	390	387	382	379	381	383	385	390	394	401	401	401	400	400	396	393	390
153	394	392	387	384	386	388	390	396	399	406	406	407	404	404	401	398	394
154	400	398	392	389	391	392	395	401	405	411	412	411	410	408	406	404	400
155	405	403	397	394	396	397	401	406	410	416	417	416	414	413	412	408	405
156	410	408	402	398	401	402	406	412	415	421	422	420	418	418	417	413	410
157	415	413	408	403	405	406	411	416	420	425	426	424	423	422	421	417	415
158	419	417	412	408	409	410	416	420	424	429	430	429	428	427	425	422	419



159	423	422	417	413	414	415	420	424	428	432	434	432	432	430	429	426	423
160	427	426	421	418	418	420	424	429	431	437	438	437	435	434	433	431	427
161	431	430	426	423	423	425	427	433	435	441	442	441	440	439	436	434	431
162	435	432	429	428	428	429	432	437	439	444	444	445	444	443	440	438	435
163	439	437	432	431	433	434	436	440	443	448	447	448	447	446	443	441	439
164	442	441	436	434	437	437	440	444	446	450	451	451	452	449	446	444	442
165	445	444	440	438	440	441	443	447	449	453	454	453	454	452	450	447	445
166	448	448	443	442	442	445	446	450	452	455	457	456	457	455	453	450	448
167	451	450	447	445	446	447	449	452	455	458	460	459	459	457	455	452	451
168	454	453	449	448	449	451	453	455	458	460	462	462	462	460	457	454	454
169	456	455	452	451	452	453	455	457	460	462	464	463	464	462	459	456	456
170	458	456	455	454	455	456	458	459	462	464	466	465	465	463	462	459	458
171	460	459	457	456	458	458	460	461	464	466	467	467	469	465	463	461	460
172	462	461	459	459	460	460	463	462	466	467	467	468	469	467	465	463	462
173	464	462	462	462	462	463	465	463	468	468	468	470	470	468	466	464	464
174	466	463	464	463	464	464	466	465	469	469	468	470	470	468	467	466	466
175	467	464	465	464	465	466	467	467	470	470	469	470	471	469	468	466	467
176	467	466	466	465	466	467	468	469	470	470	469	470	471	469	468	467	467
177	468	468	467	466	467	467	468	469	470	470	470	470	471	469	469	468	468
178	469	468	468	467	468	468	469	470	470	470	471	470	470	470	469	469	469
179	469	469	469	468	469	469	470	470	470	470	471	470	470	470	469	469	469
180	470	470	470	470	470	470	470	470	470	470	470	470	470	470	470	470	470



2.2 Electrical, Photometric and Chromaticity Measurements

Test date	2022-07-13	Test Ambient:	25 ± 1 ° C
Test Orientation	As intended	Stabilization Time (min)	60
Model Number	LNSLOT1A48UNHD8SC148DIP WH(3000K)	Total Operating Time(min)	61

Electrical Measurement:

Sample No.	Voltage (Vac)	Frequency (Hz)	Current (A)	Power (W)	Power Factor	THD %
JAE220201-E1	120.0	60	0.3996	47.41	0.9888	13.50
	347.0	60	0.1437	46.83	0.9391	14.90

Chromaticity Measurement - Sphere-Spectroradiometer

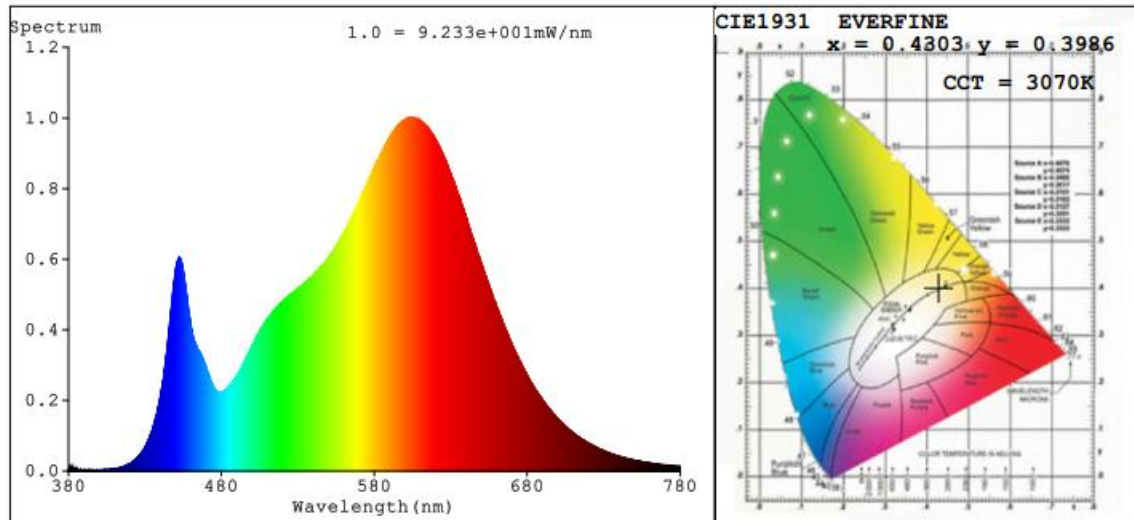
Method(Self-absorption:1.1319)(4π geometry):

Parameter	Result
Test Voltage (V)	120
Frequency (Hz)	60
CCT (K)	3070
Duv	-0.0013
Chromaticity (x, y)	x=0.4303 y=0.3986
Chromaticity (u', v')	u'=0.2486 v'=0.5182
Color Rendering Index (CRI)	84.8
R9	15
Rg	96
Rf	86
Rcs,h1	-11

Photometric Measurement –Sphere-Spectroradiometer Method:

Parameter	Result	
Test Voltage (V)	120	347
Frequency (Hz)	60	60
Total Luminous (lm)	4968	4957
Luminous Efficacy (lm/W)	104.79	105.85

Spectral Power Distribution & Chromaticity Diagram



R1 =84 R2 =94 R3 =95 R4 =83 R5 =85 R6 =92 R7 =83
 R8 =62 R9 =15 R10=85 R11=83 R12=76 R13=87 R14=98 R15=77

TM30

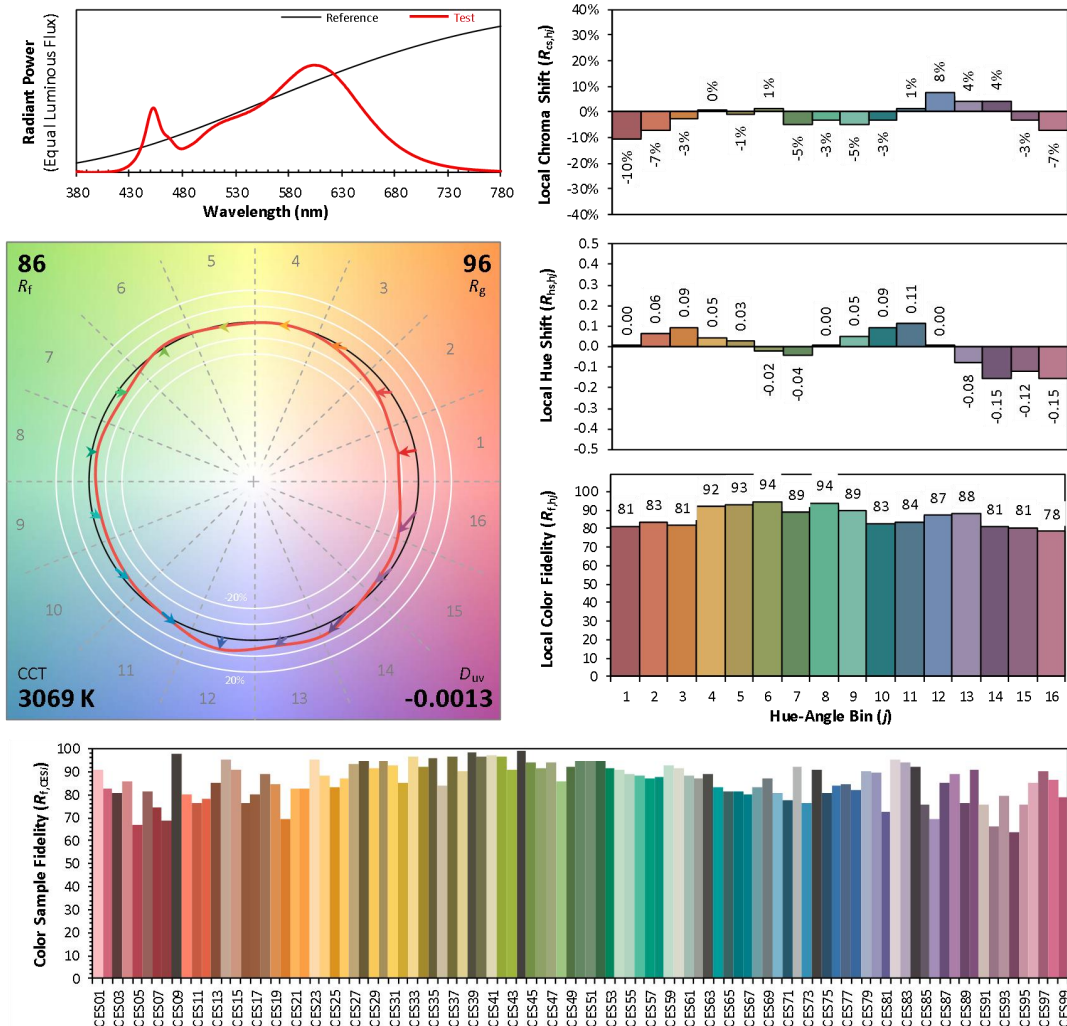
ANSI/IES TM-30-18 Color Rendition Report

Source: BXEN-XXX-11L-37A-00-0-0

Manufacturer: LEDVANCE LLC

Date: 2022-07-13

Model: LNSLOT1A48UNHD8SC148DIPWH (3000K)



Notes: This is a recommended method for displaying ANSI/IES TM-30-18 information.

x 0.4303
 y 0.3985
 u' 0.2487
 v' 0.5182

CIE 13.3-1995
(CRI)

R_a 85
 R_g 15

Colors are for visual orientation purposes only. Created with the ANSI/IES TM-30-18 Calculator Version 2.0



2.3 Electrical, Photometric and Chromaticity Measurements

Test date	2022-07-13	Test Ambient:	25 ± 1 ° C
Test Orientation	As intended	Stabilization Time (min)	60
Model Number	LNSLOT1A48UNHD8SC148DIP WH(3500K)	Total Operating Time(min)	61

Electrical Measurement:

Sample No.	Voltage (Vac)	Frequency (Hz)	Current (A)	Power (W)	Power Factor	THD %
JAE220201-E1	120.0	60	0.3977	47.16	0.9882	13.56
	347.0	60	0.1430	46.58	0.9385	14.96

Chromaticity Measurement - Sphere-Spectroradiometer

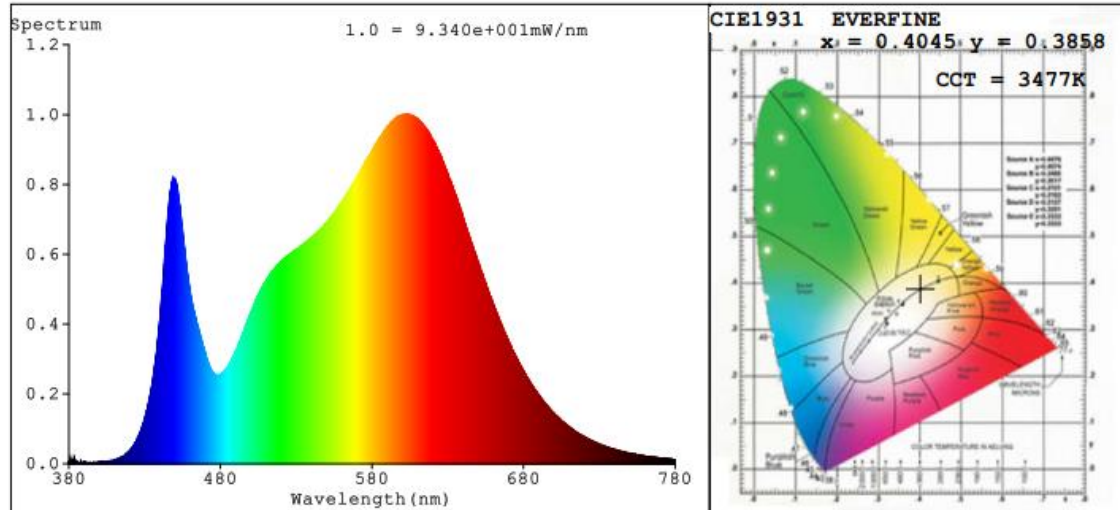
Method(Self-absorption:1.1315)(4π geometry):

Parameter	Result
Test Voltage (V)	120.0
Frequency (Hz)	60
CCT (K)	3477
Duv	-0.0020
Chromaticity (x, y)	x=0.4045 y=0.3858
Chromaticity (u', v')	u'=0.2372 v'=0.5091
Color Rendering Index (CRI)	86.3
R9	22
Rg	98
Rf	86
Rcs,h1	-10

Photometric Measurement – Sphere-Spectroradiometer Method:

Parameter	Result	
Test Voltage (V)	120	347
Frequency (Hz)	60	60
Total Luminous (lm)	5433	5421
Luminous Efficacy (lm/W)	115.20	116.38

Spectral Power Distribution & Chromaticity Diagram



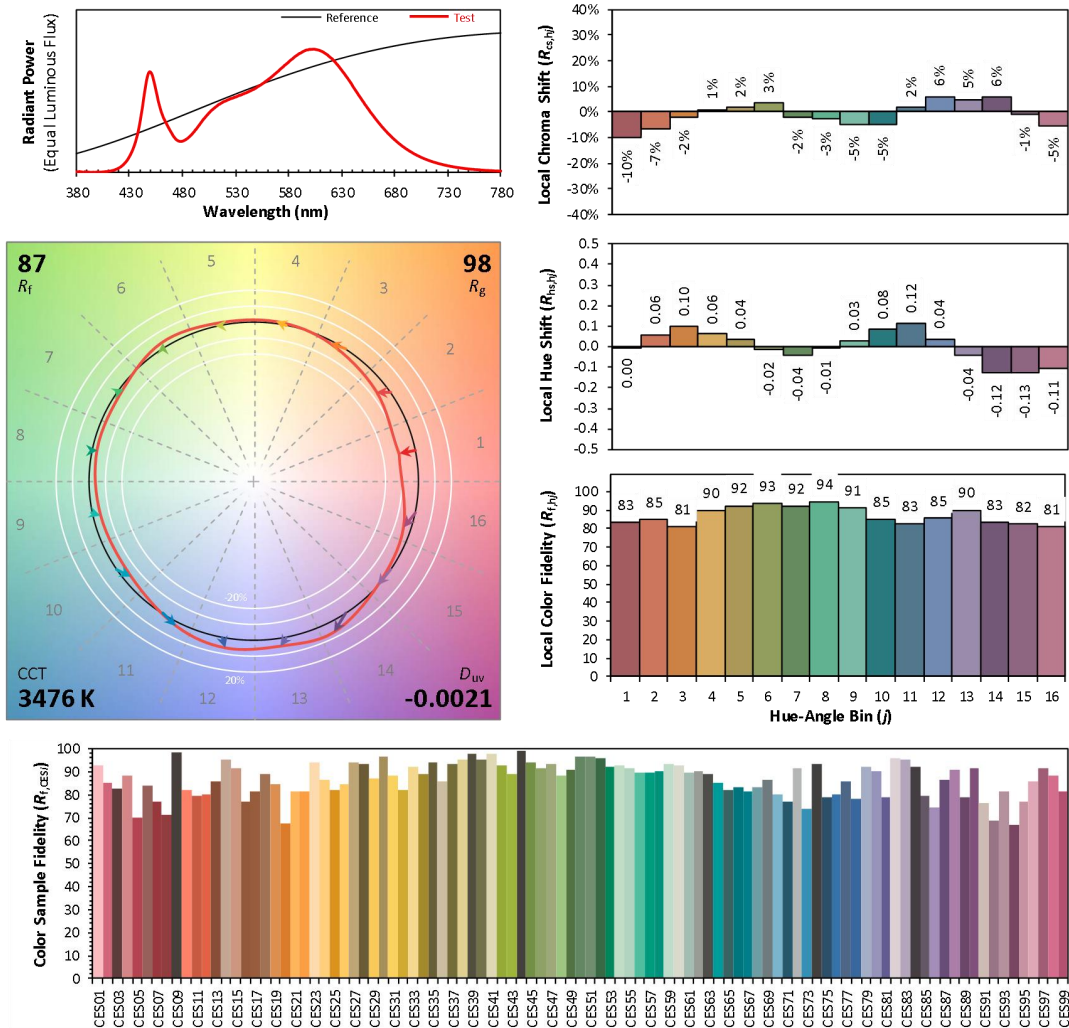
R1 =86	R2 =93	R3 =97	R4 =86	R5 =86	R6 =91	R7 =86	
R8 =67	R9 =22	R10=83	R11=86	R12=74	R13=88	R14=99	R15=79



TM30

ANSI/IES TM-30-18 Color Rendition Report

Source:	BXEN-XXX-11L-37A-00-0-0	Manufacturer:	LEDVANCE LLC
Date:	2022-07-13	Model:	LNSLOT1A48UNHD8SC148DIPWH (3500K)



Notes: This is a recommended method for displaying ANSI/IES TM-30-18 information.

x 0.4045
 y 0.3856
 u' 0.2373
 v' 0.5090

CIE 13.3-1995
(CRI)
 R_a 86
 R_9 22

lors are for visual orientation purposes only. Created with the ANSI/IES TM-30-18 Calculator Version 2.0



2.4 Electrical, Photometric and Chromaticity Measurements

Test date	2022-07-13	Test Ambient:	25 ± 1 ° C
Test Orientation	As intended	Stabilization Time (min)	60
Model Number	LNSLOT1A48UNHD8SC148DIP WH(4000K)	Total Operating Time(min)	61

Electrical Measurement:

Sample No.	Voltage (Vac)	Frequency (Hz)	Current (A)	Power (W)	Power Factor	THD %
JAE220201-E1	120.0	60	0.4026	47.76	0.9886	13.52
	347.0	60	0.1448	47.17	0.9389	14.92

Chromaticity Measurement - Sphere-Spectroradiometer

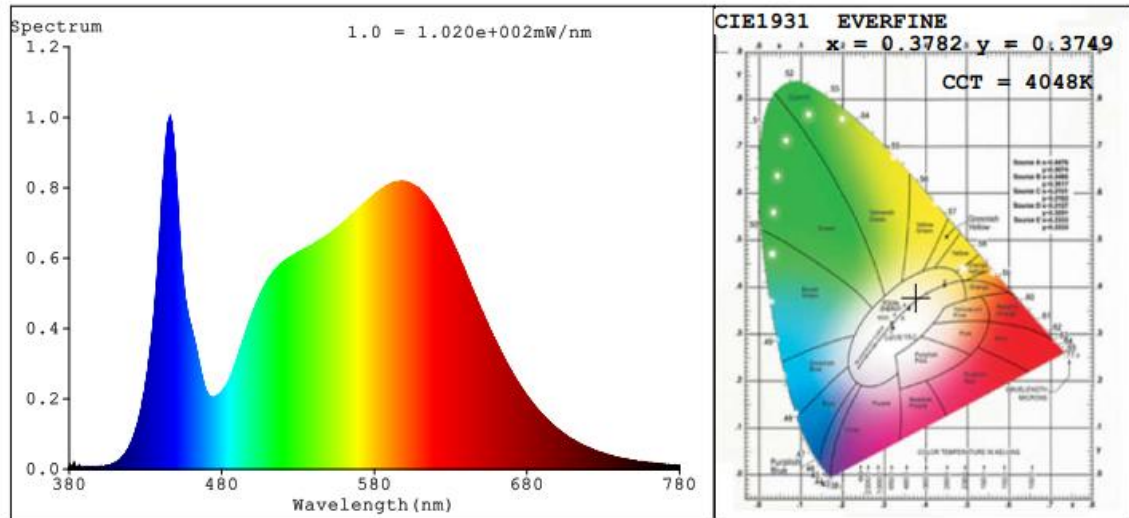
Method(Self-absorption:1.1316)(4π geometry):

Parameter	Result
Test Voltage (V)	120.0
Frequency (Hz)	60
CCT (K)	4048
Duv	-0.0002
Chromaticity (x, y)	x=0.3782 y=0.3749
Chromaticity (u', v')	u'=0.2244 v'=0.5004
Color Rendering Index (CRI)	84.9
R9	20
Rg	98
Rf	85
Rcs,h1	-11

Photometric Measurement – Sphere-Spectroradiometer Method:

Parameter	Result	
Test Voltage (V)	120	347
Frequency (Hz)	60	60
Total Luminous (lm)	5361	5350
Luminous Efficacy (lm/W)	112.25	113.42

Spectral Power Distribution & Chromaticity Diagram



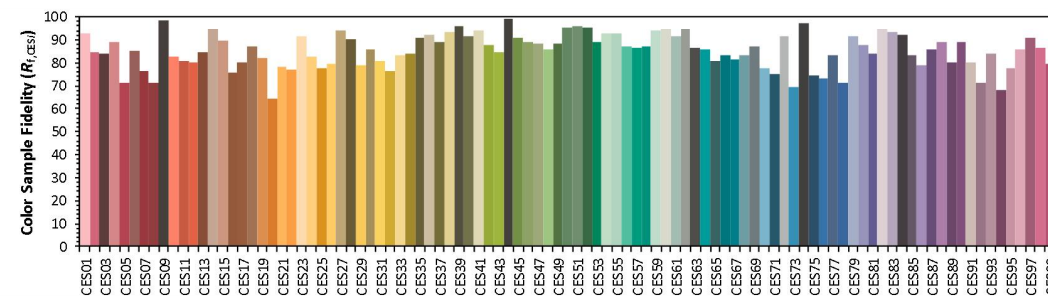
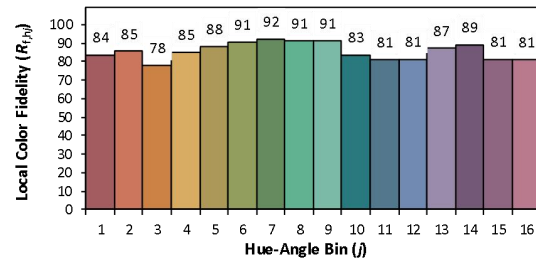
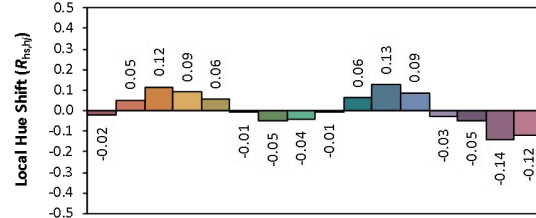
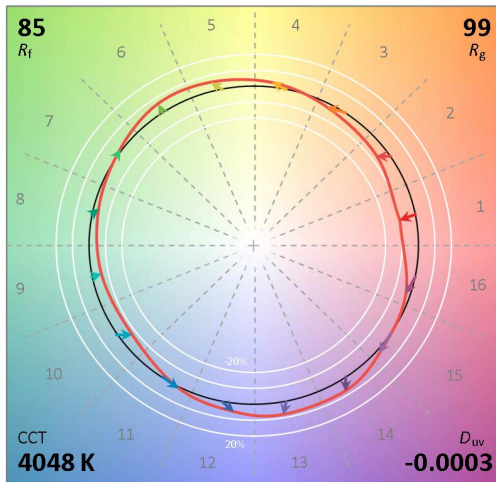
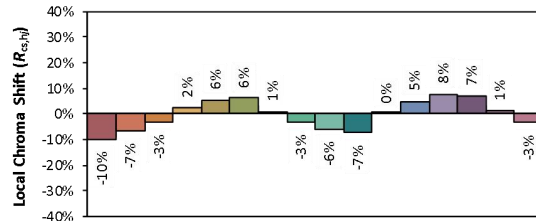
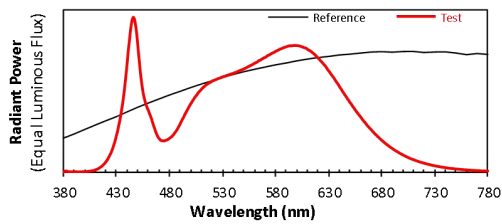
R1 =84	R2 =89	R3 =93	R4 =86	R5 =85	R6 =85	R7 =87	
R8 =70	R9 =20	R10=74	R11=87	R12=70	R13=85	R14=96	R15=78



TM30

ANSI/IES TM-30-18 Color Rendition Report

Source:	BXEN-XXX-11L-37A-00-0-0	Manufacturer:	LEDVANCE LLC
Date:	2022-07-13	Model:	LNSLOT1A48UNHD8SC148DIPWH (4000K)



Notes: This is a recommended method for displaying ANSI/IES TM-30-18 information.

x 0.3782
 y 0.3747
 u' 0.2244
 v' 0.5003

CIE 13.3-1995
(CRI)

R_a 85
 R_g 20

lors are for visual orientation purposes only. Created with the ANSI/IES TM-30-18 Calculator Version 2.0



3. Test Equipment

Equipment ID	Equipment Name	Last Calibration Date	Next Calibration Date
ST-R-702	2 meter Integrating Sphere	Verified by D204 standard lamp	
ST-R-701	Spectral analysis system HAAS-1200	Verified by D204 standard lamp	
ST-R-703	Standard Lamp D204	2022-01-14	2023-01-13
ST-R-704	Power Meter for Integrating Sphere	2022-01-03	2023-01-02
ST-R-707	Temperature Probe for Integrating Sphere	2022-01-03	2023-01-02
ST-R-714	Goniophotometer system	Verified by D908S standard lamp	
ST-R-710	Standard Lamp D908S	2022-01-14	2023-01-13
ST-R-711	Power Meter for Goniophotometer	2022-01-03	2023-01-02
ST-R-709	Hygrothermograph for Goniophotometer	2022-01-03	2023-01-02
Uncertainty(K=2): Photometric Measurement (Sphere):3.40% Chromaticity Measurement(Sphere):44.8K Photometric Measurement(Goniophotometer):3.64%			

4. Product Photo



***** END OF REPORT *****